

air**Bridge**

Wireless Ethernet Client



Instant Wireless Access for all Ethernet Equipment

THE MISSING LINK

Instant access to data is an essential requirement of the modern world. Be it a sales person requiring to authorize a credit card in the foyer of the mall or be it a printer that churns out the customer's order in the kitchen to provide efficient service on the restaurant table.

The lightning fast growth of high speed Wireless LANs is driven by this need for efficiency in running a business or providing better service to supersede the competition. Like the situations above, such connectivity needs are not restricted to connect PCs to LAN and Internet but goes way beyond.

Would it not be a great day if all the expensive and useful equipment connected to the LAN could be moved where it is needed and not where the LAN port on the wall is? Well that day has just arrived. airBridge™ from smartBridges can make any equipment connected to Ethernet go wireless.

airBridge™ - ETHERNET PORT WHERE YOU NEED IT

airBridge™ is a Wireless Ethernet client. It provides wireless LAN connectivity to all devices that connect to an Ethernet port. Based on the IEEE 802.11b industry standard wireless technology and operating in the unlicensed 2.4 GHz band, airBridge™ provides high speed data rate of 11 Mbps.

LongRange™ Radio Performance that goes the Distance

airBridge™ features LongRange™ wireless design that provides 100 mW radio power to deliver High data throughput and long operating range. smartBridges' superior design of the radio receiver enhances the sensitivity to incredible -95 dBm level. These superior receiver and transmitter characteristics result in the long-range wireless coverage of up to 800 meters (1/2 mile) at 11 Mbps of data rate in free open space. At a lower speed of 1Mbps, the range has been tested up to 1600 meter (1 Mile). Better range translates directly into lower wireless infrastructure cost when the need is to cover a large area.

Instant and elegant Connectivity for Ethernet Equipment

airBridge™ allows instant connectivity right out of the box. Once setup to work with a particular wireless network, any Ethernet-ready device including printers, copiers, PCs, point-of-sale devices, terminals, etc. can be just plugged in to the airBridge™ to connect them to the wireless network. The devices thus can be placed at their Point of work with the complete connectivity maintained. There are no delays, no hefty expenses of tearing up the walls and all the unsightly wiring up.

No Drivers Needed

airBridge™ has embedded software that performs complete data translation between the Client device and the wireless network. No special Device drivers are required to be loaded on the Client device. This makes the airBridge™ independent of the Client operating system eliminating much trouble of finding and configuring appropriate device drivers like those needed for other types of wireless clients.

Industry Standard compliant for Inter-operability

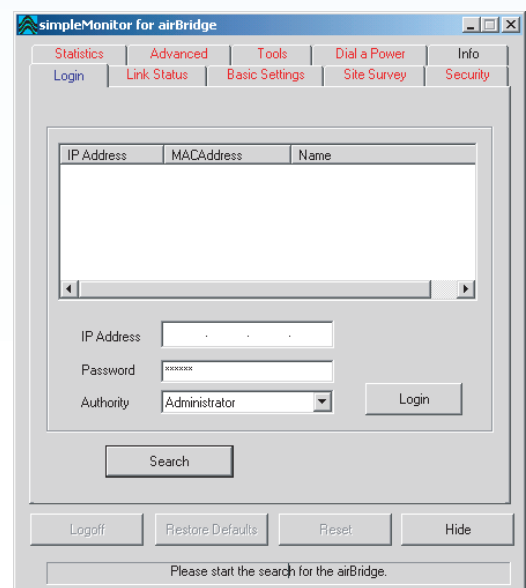
airBridge™ is based on the IEEE 802.11b industry standard for Wireless LANs. Automatic radio tuning technology is used during manufacturing to ensure that the airBridge™ can inter-operate with any standard compliant device. airBridge™ has been tested for reliable operation with the wireless equipment from all leading manufacturers.

Enhanced Security to prevent eavesdropping

airBridge™ is equipped with a choice of security levels to protect the data. It comes with standard Wi-Fi prescribed Wired Equivalent Privacy (WEP) security key. Additionally airBridge™ also offers enhanced 64 -bit or 128-bit key encryptions for superior data protection.

simpleMonitor™ The Intuitive Network Management Tool

airBridge™ is supported by simpleMonitor™, an advanced Management tool, designed specifically to simplify wireless network management complexities. simpleMonitor™ is designed using Open Systems architecture. It utilizes popular network management standards (SNMP, MIB) to manage the wireless-centric network parameters such as, Channel selection, Network association, data rate, and site survey. Its graphical user interface is extremely intuitive for navigating, examining, and managing the wireless network.



Variety of Applications

Any Ethernet-ready device, including printers, copiers, PCs, point of-sale devices, monitoring equipment, etc., can be connected directly to the airBridge™ without the expense or delay of cabling.

Cost effective replacement for the Ethernet Cable

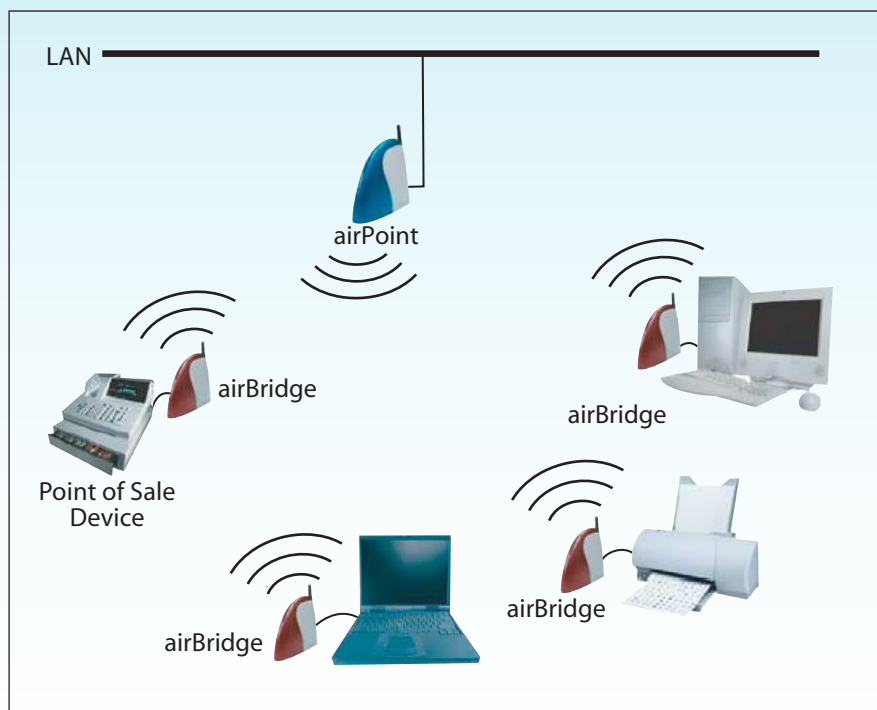
Class rooms in Schools, Selling Points in the store, Printers in Restaurant Kitchen. The applications for airBridge™ are limited only by the imagination. In a nutshell, where ever you need to connect an Ethernet equipment but the cabling and concealing costs and delays look prohibitive, think airBridge™.

Ideal Wireless Client for Hotels, Lounges, Airports and HotSpots

As airBridge™ requires no driver installation, it becomes an ideal wireless access device for the guests who would like to access the wireless LAN. Over 27 Million Ethernet Port ready notebooks have been bought by business travelers in recent years and airBridge™ can help them go wireless instantly without creating a software residuum as in the case of USB and PCMCIA adapters.

On the spot temporary LAN where you need it

Construction or other site offices, interim need for Classroom Net access or similar other need for a temporary LAN / shared Internet access is cost effectively met by deploying airBridge™ based solutions. Installation of such wireless LANs is straightforward and the whole setup can be re-used at another location with minimum effort.



Features at a Glance

- Driver-less Installation.
- Works with all the Operating Systems including any Ethernet ready printers, Copiers or Point of Sale devices
- 100 mW RF output power with antenna for Long range of 800 meters (1 mile) at 1 Mbps
- High Receiver sensitivity of up to -95 dBm; provides error free data transfer
- High speed data rate up to 11Mbps
- High Level security with full 128 bit Key WEP encryption
- Auto Fall back data rate for Long distance communication and Noisy environments
- Compatible with IEEE 802.11b & IEEE 802.3 standard
- Embedded with SNMP MIBS for remote monitoring features
- Firmware is upgradeable to protect your investment
- Comprehensive 1 Year Warranty

Technical Specifications

Product No: SB2100
Standards: IEEE 802.11b, IEEE 802.3,
System Interface: Ethernet RJ45 (10/100Mbps)
Data Rate: 11Mbps - CCK
 Auto Fall Back 5.5 Mbps - CCK
 2Mbps - DQPSK
 1Mbps - DBPSK
Frequency Band: 2400 - 2483.4 MHz
Wireless Medium: DSSS
No. of Channels: 14 : Total Channels (Overlapping)
 11 : FCC
 13 : ETSI
 14 : Japan
Modulation: DQPSK / DBPSK / CCK
Output Power: 100mW (Max)
Receiver Sensitivity (at 1/2/5.5/11 Mbps): -94/-88/-87/-84 dBm

Range: Outdoor open space 800 meters (1/2 mile) at 11 Mbps
 1600 meters (1 mile) at 1Mbps
 Semi Open Office 70 meters at 11 Mbps
 120 meters at 1 Mbps
 Closed Office 40 meters at 11 Mbps
 80 meters at 1 Mbps
Antenna: External with 2.2 dBi Gain
Security: 64 and 128 bit Wired Equivalent Protection
Management : SNMP ver 1 (MIB, Tarps)
 : TFTP (for Firmware down load)
Power Source: AC Adapter 100~230 V AC 50/60 Hz
LED Indicators: Power, Ethernet Link , Transmission
Operating Temp: 0°C (32 F) to +50°C (122 F)
Humidity (non -condensing): 10 to 85 % typical
Dimensions: L 122mm; W 42mm; H 118mm